



Model 9200-A Mini AC Clamp-On Instruction Manual

1. Triplett Model 9200-A Features

- Economical, Compact AC Current Clamp-On
- Easily Fits in Shirt Pocket!
- Measures from 0 to 300 Amps AC in Two Ranges
- Simple, Two Button Operation
- Large, 3 3/4 Digit, 4000 Count Display
- Autoranging
- Data Hold
- Overrange Indication
- Auto Power Off
- Low Battery Indication
- Powered by one 3V Battery
- Carrying Case, Wrist Strap and Battery included
- 1 Year Limited Warranty

2. Model 9200-A Specifications

Display: 3 3/4 Digit, 4000 Count LCD, 12mm high

Operating Principle: Dual Slope Integration

Range Selection: Autoranging

Overload Indication: "OL" is displayed when input exceeds 405 A

Low Battery Warning: "BAT" symbol is displayed

Sampling Rate: 2.5 times per second

Data Hold: Holds reading when DH Button is pressed

Overload Protection: AC Current, 400A AC for 60 Seconds Max

Operating Temperature & Humidity: 32° F to 104° F, less than 80% non-condensing

Storage Temperature & Humidity: 14° F to 122° F, less than 70% non-condensing atmosphere

Safety / Agency Approvals: CE Mark, IEC 1010-1 Overvoltage CAT III 300VAC, Class II and EMC Test Passed

Auto Power Off: Power turns off after 12 min. of non-use

Note: Power consumption is reduced in Auto Power Off. For maximum battery life, turn the power off manually.

Battery: 1 - 3 Volt CR2032 Button Type (Included)
Note: The installed battery may be depleted if product was turned on in the package. If so, replace battery with a fresh one.

Battery Life: 100 Hours Continuous Operation

Conductor Size: 27mm Max (1.14")

Dimensions: 5.8" (L) x 1.8" (W) x 0.8" (H)

Weight: 3.4 oz.

AC Current			
Range	Resolution	Accuracy	Max. Input Current
40.00A	10mA	±(1.8% rdg ± 5 dgt) *	300A (Max 300V Line)
300.0A	100mA		
Overload Protection: 400A AC for 60 Seconds Max			
Frequency Response: 50Hz-60Hz, * 0 - 0.4A add 5 dgt 40Hz-500Hz, add 1.5% to above accuracy			

3. Front Panel, Display Details

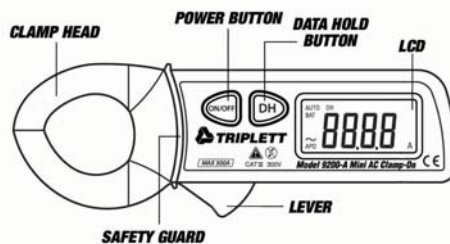


Figure 1

3.1 Model 9200-A LCD



- ~ : Alternating Current (AC)
- BAT : Low Battery Warning
- AUTO : Autoranging
- DH : Data Hold
- A : Amps
- AP0 : Auto Power Off

3.2 On/Off and Data Hold Buttons

Momentarily press the ON/OFF Power Button to turn the unit on or off.

To save a reading in the display, momentarily press the DH (Data Hold) Button. The DH symbol will appear in the LCD display. To clear the saved reading, momentarily press the DH button again.

3.3 Clamp Head

When measuring AC Current, open Clamp Head by pressing the Lever and clamp around a single conductor to be tested.

NOTE: You cannot measure the current to an appliance by clamping around its power cord. You must clamp around only the HOT or NEUTRAL conductor, not the entire cord.

3.4 Safety Guard

For safety, fingertips must NOT go past the Safety Guard.

4. SAFETY PRECAUTIONS

Electrical measurements can be very dangerous without proper knowledge of the risks involved. To reduce the possibility of injury, the following precautions must be observed. However, no written warnings or cautions can prevent the misuse, abuse, or careless operation of the product. Safe measurements are only possible if the user follows safety guidelines.

SAFETY CONSIDERATIONS

Read all WARNINGS and CAUTIONS in this manual, especially those identified with the Δ symbol, prior to using the product. Failure to do so may result in product damage or injury to the user.

Δ WARNING!!! Δ

AC Power Lines are very dangerous and without proper knowledge, can be lethal to the user. Power Lines that are considered High Energy Circuits are especially dangerous. High Energy Circuitry is usually regarded as any circuitry capable of supplying over 4000 watts to a load before a safety device (like a fuse) interrupts the circuit. Arcs of an explosive nature can develop in this type of circuitry, causing serious injury or even death. The Triplett Model 9200-A is not designed for use in High Energy Circuitry!

4.1 Warnings

Δ Condition of Meter

Make sure that the meter is not damaged in any way (cracks, missing parts, etc.) before every measurement. Make sure that the body is free of dust, grease, and moisture.

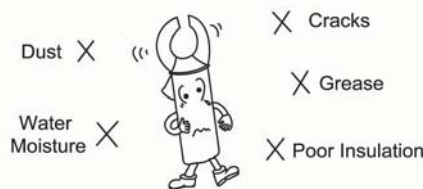


Figure 2

Δ High Energy Circuits

This product is not intended for use on High Energy Circuits such as Distribution Transformers, Bus Bars, Large Motors, etc., which are very dangerous.

Δ Maximum Voltage and Current

The maximum current is 300A AC. The maximum voltage is 300V AC. Do not attempt to measure current that might exceed the specified value or current on lines whose voltage exceeds 300 VAC.

Δ Safety Guard

Do not let fingers go over the Safety Guard when gripping the Model 9200-A.

4.2 General Warnings and Cautions

Δ **Warning 1** - Do not let children use this instrument or those who are unable to recognize the dangers of electrical measurements.

Δ **Warning 2** - Do not make measurements while barefooted. This greatly increases the possibility of electrical shock.

Δ **Warning 3** - Do not attempt to clean the case with any harsh solvents. If necessary, use mild detergent and water.

Δ **Warning 4** - Avoid severe mechanical shock or vibration, extreme temperature or very strong magnetic field.

Δ **Warning 5** - Remove the battery when not in use for an extended period of time. A low battery might leak electrolyte and corrode the internal components.

5. Measurement Procedures

5.1 Preparation For Use

1. Instruction Manual

Prior to use, read this Instruction Manual carefully and acquaint yourself with the specifications and functions of the instrument. Especially read and observe carefully the Safety Precautions in Section 4.

2. Battery

One 3V CR2032 battery is installed in this instrument. When the battery is low and "BAT" is displayed on the LCD, open the Battery Cover and replace the battery with a fresh one. Refer to section 6.1 Battery Replacement for details.

3. Overrange Indication

If the Input Value exceeds approximately 405 Amps AC, "OL" is displayed on the LCD.

Δ WARNING!!!

DO NOT attempt to make any measurements that might exceed 300A AC (max 300V Line)

4. Auto Power Off

Approximately 12 minutes after the operation of either button on the product, the unit will go into a 'sleep' mode to reduce its power consumption. In the sleep mode, the LCD will turn off, but the unit is still operating at low power. To turn the unit off completely (which maximizes the battery life), press the ON/OFF button before the unit goes to sleep, or if the unit is sleeping, press the ON/OFF button to turn the unit on, then press it again to turn the unit off.

5. Symbols

The following International Symbols shown on the instrument and in this instruction manual aid in the safe operation of the instrument.

- Δ : Caution (Refer to Instruction Manual)
- ~ : Alternating Current (AC)
- \perp : Earth Ground
- \square : Double Insulation

5.2 AC Current (~A) Measurements

⚠ WARNING!!!

Maximum Voltage of AC Current Line is 300V AC. DO NOT attempt to make any current measurements that might exceed 300A AC, the Maximum Input Current.

Prior to use, read this Instruction manual carefully and acquaint yourself with the specifications and functions of the instrument. Especially, read and observe carefully the Safety Precautions in Section 4.

1. Momentarily press the ON/OFF button to turn the power on.

⚠ WARNING!!!

For safe measurements, fingertips must be placed behind the Safety Guard of this instrument. DO NOT touch any part of the Power Line or the Electrical Circuit.

2. Open Clamp Head by pressing the Lever and clamp around a single conductor. See Figure 3.

NOTE: You cannot measure the current to an appliance by clamping around its power cord. You must clamp around only the HOT or NEUTRAL conductor, not the entire cord.

3. Read the current on the LCD.

4. To capture the reading, activate the Data Hold by momentarily pressing the DH button.

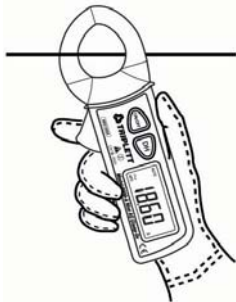


Figure 3

5. When measurements are finished, remove Clamp Head from the conductor.

6. Maintenance

6.1 Battery Replacement

⚠ WARNING!!!

Remove Clamp Head from the circuit being measured before attempting to replace the battery.

1. If the battery is low and "BAT" is displayed on the LCD, replace the battery.

2. Turn the Model 9200 off.

3. Remove the screw on the Battery Cover on the back side of the instrument.

4. Replace the low battery with a fresh one - 3V CR2032 type.

NOTE: A small screwdriver or pair of tweezers may be helpful in removing the depleted battery. See Figure 4"

5. Replace the Battery Cover and screw. Refer to Figure 4.

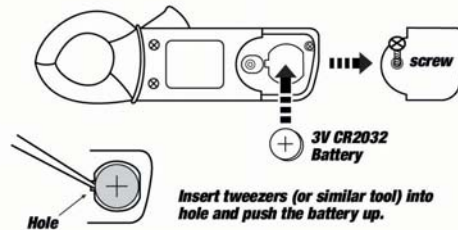


Figure 4

6.2 Periodic Test and Calibration

Periodic tests and calibration are necessary to ensure safe and accurate measurements. It is recommended that the instrument be checked and calibrated once each year and/or after it is repaired.

TRIPLETT PRODUCT RETURN INSTRUCTIONS

In the unlikely event that you must return your Triplet equipment for repair, the following steps must be taken.

- 1) Call 1-800-TRIPLETT to obtain a Return Material Authorization (RMA) number from Customer Service.
- 2) Enclose a copy of the original sales receipt showing date of purchase.
- 3) Clearly print the RMA number on the outside of the shipping container.
- 4) Return to: **Triplet / Jewell Instruments
850 Perimeter Road
Manchester, NH 03103
ATTN: Repair Dept.**

Be sure to include a full description of the problem, and a telephone number, street address, or email address, where you can be contacted, and a return address where the meter can be shipped to upon repair.

Triplet One Year Limited Warranty

Triplet / Jewell Instruments warrants instruments and test equipment manufactured by it to be free from defective material or workmanship and agrees to repair or replace such products which, under normal use and service, disclose the defect to be the fault of our manufacturing, with no charge within one year of the date of original purchase for parts and labor. If we are unable to repair or replace the product, we will make a refund of the purchase price. Consult the Instruction Manual for instructions regarding the proper use and servicing of instruments and test equipment. Our obligation under this warranty is limited to repairing, replacing, or making refund on any instrument or test equipment which proves to be defective within three years from the date of original purchase.

This warranty does not apply to any of our products which have been repaired or altered by unauthorized persons in any way so as, in our sole judgment, to injure their stability or reliability, or which have been subject to misuse, abuse, misapplication, negligence, accident or which have had the serial numbers altered, defaced, or removed. Accessories, including batteries and fuses, not of our manufacture used with this product are not covered by this warranty.

To register a claim under the provisions of this warranty, contact Triplet / Jewell Instruments' Customer Service Department for a Return Authorization Number (RMA) and return instructions. **No returned product will be accepted without an RMA number.** Upon our inspection of the product, we will advise you as to the disposition of your claim.

ALL WARRANTIES IMPLIED BY LAW ARE HEREBY LIMITED TO A PERIOD OF ONE YEAR FROM DATE OF PURCHASE, AND THE PROVISIONS OF THE WARRANTY ARE EXPRESSLY IN LIEU OF ANY OTHER WARRANTIES EXPRESSED OR IMPLIED.

The purchaser agrees to assume all liability for any damages and bodily injury which may result from the use or misuse of the product by the purchaser, his employees, or others, and the remedies provided for in this warranty are expressly in lieu of any other liability Triplet / Jewell Instruments may have, including incidental or consequential damages.

Some states (USA ONLY) do not allow the exclusion or limitation of incidental or consequential damages, so the above limitation or exclusion may not apply to you. No representative of Triplet / Jewell Instruments or any other person is authorized to extend the liability of Triplet / Jewell Instruments in connection with the sale of its products beyond the terms hereof.

Triplet / Jewell Instruments reserves the right to discontinue models at any time, or change specifications, price or design, without notice and without incurring any obligation.

This warranty gives you specific legal rights, and you may have other rights which vary from state to state.

**TRIPLETT
Jewell
Instruments**

850 Perimeter Road, Manchester, NH 03103
PHONE: 800-TRIPLETT FAX: 603-622-2690
www.triplett.com

Triplet Model 9200-A Mini AC Clamp-On Meter
Cat. No.: 9200
Made in China

84-878